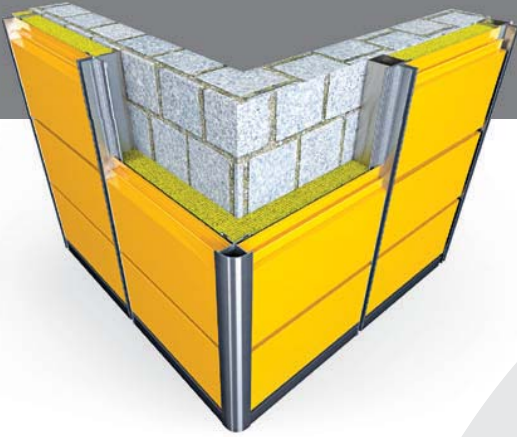


ARWIS TERRA COTTA CEPHE SİSTEMİ

AC 70





DIŞ CEPHE KAPLAMA SİSTEMLERİ

70 AC 644

70 AC 645

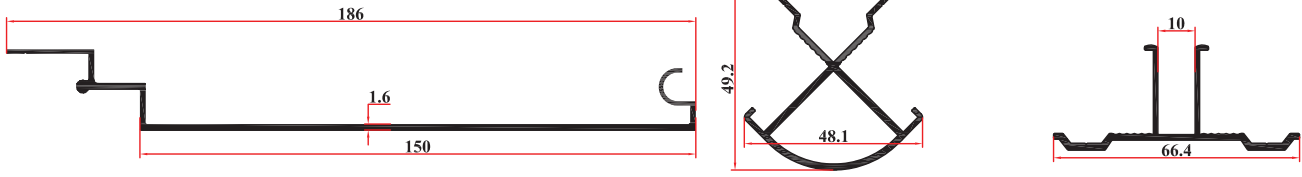
70 AC 646

KALIP NUMARASI

644

645

646

**AĞIRLIK:0,988 kg/mt****0,705 kg/mt****0,505 kg/mt**

jx:124,406

jx:6,138

jx:5,001

jy:1,246

jy:3,856

jy:1,288

Lambiri Profili

Köşe Bağlantı

Kasa Bağlantı

SİSTEM NUMARASI

70 AC 647

70 AC 648

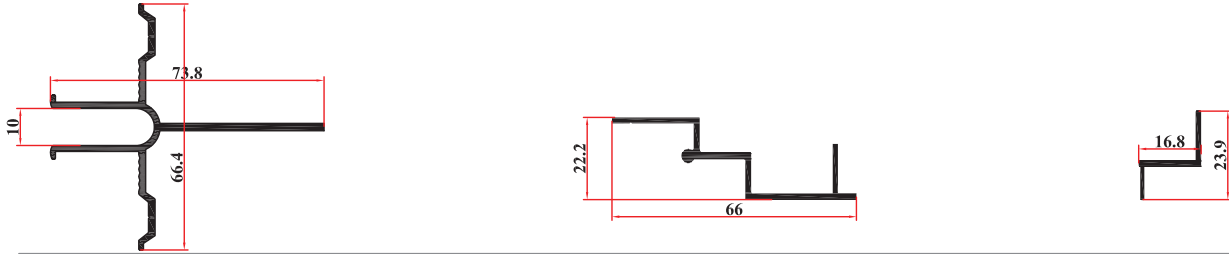
70 AC 511

KALIP NUMARASI

647

648

511

**AĞIRLIK:0,802 kg/mt****0,454 kg/mt****0,165 kg/mt**

jx:9,097

jy:4,860

Çelik Bağlantı Ankraji

Alt Bitim Tiji

Üst Bitim Tiji

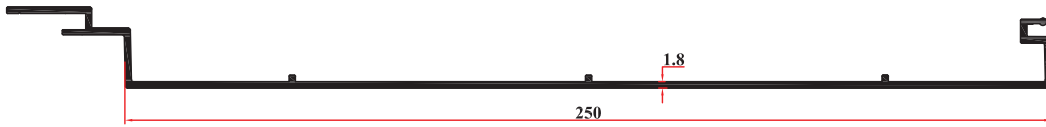
ÖLÇEK:1/2

SİSTEM NUMARASI

90 AS 649

KALIP NUMARASI

649

**AĞIRLIK:1,660 kg/mt**

jx:466,906

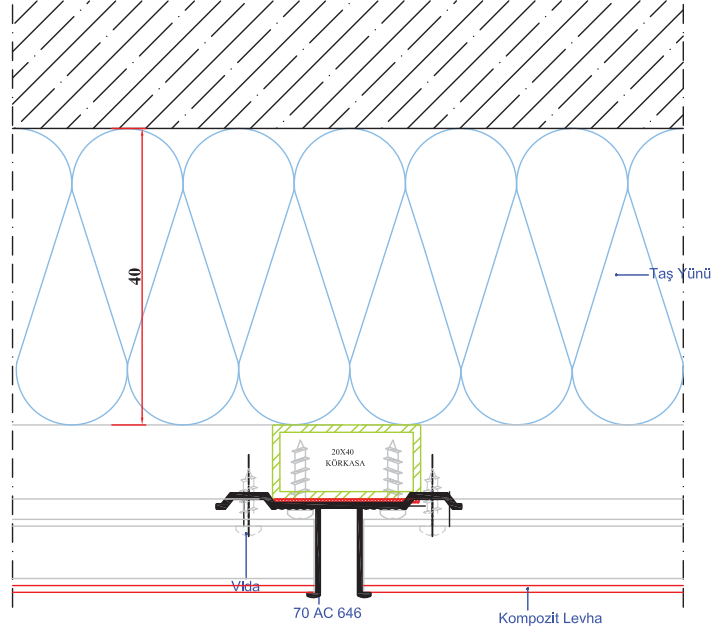
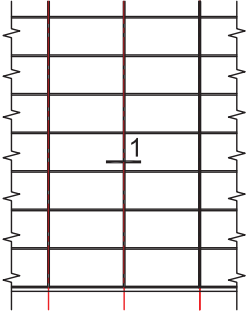
jy:2,244

Orta Kenet Profili

AKSESUAR KODU	AKSESUAR RESMİ	KULLANILDIĞI YER	AKSESUAR KODU	AKSESUAR RESMİ	KULLANILDIĞI YER
70 AC F30 İç Cam Fıtlı USN 30 1 Koli 10 kg/179 m			70 AC F29 İç Cam Fıtlı		

Dikkat: Sistemde 2.5 metreyi geçmeden ara dikme atılmalıdır.

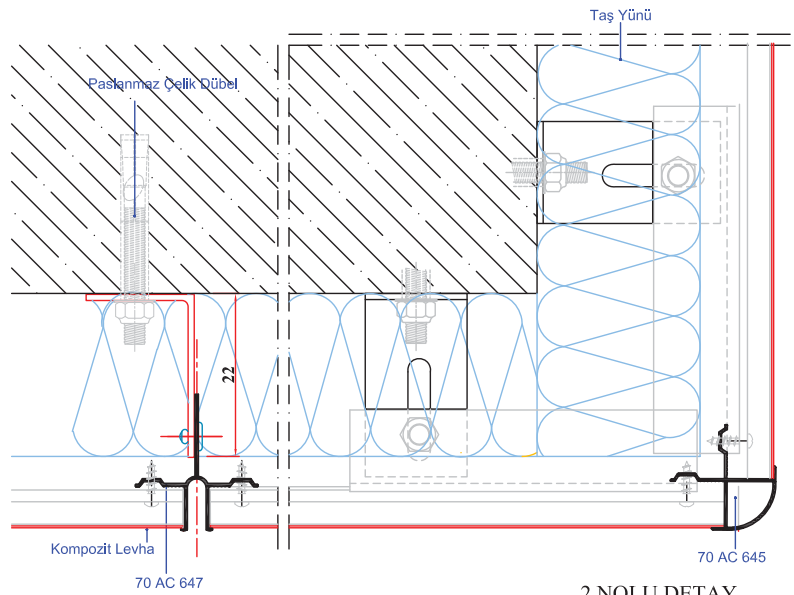
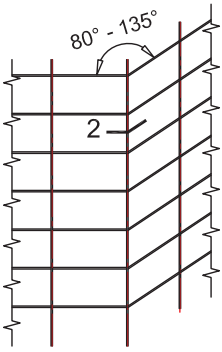
SİSTEM DETAYI



1 NOLU DETAY

ÖLÇEK:1/2

SİSTEM DETAYI

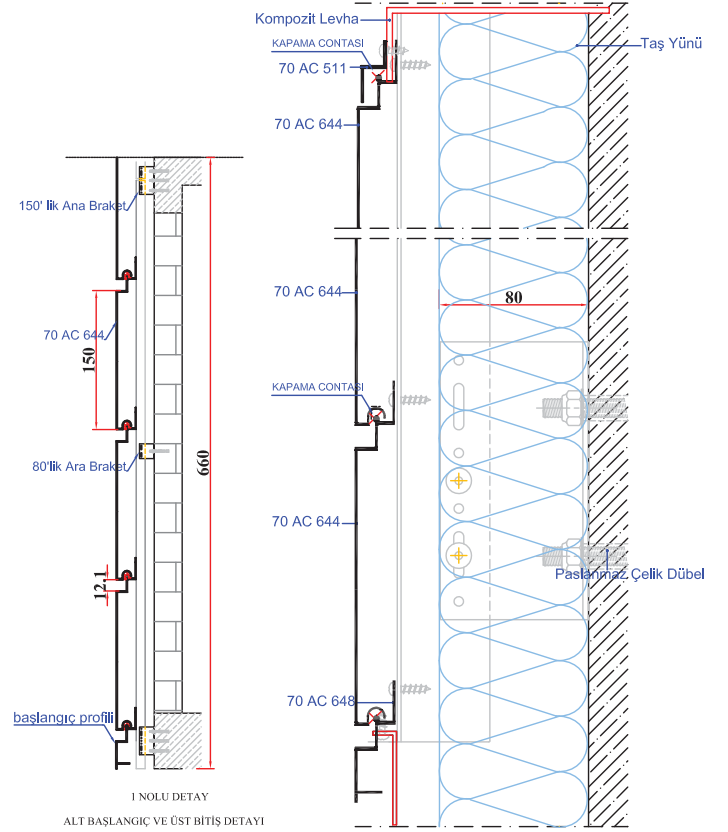
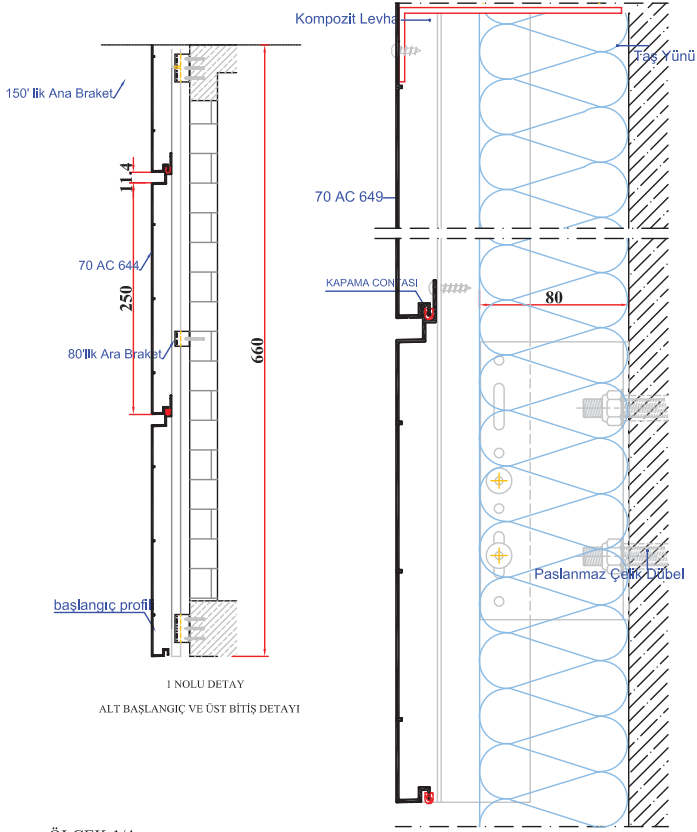


2 NOLU DETAY

Dikkat: Sistem taşıyıcı sistem hesabı statiker tarafından yaptırılmalıdır.

ÖLÇEK:1/4

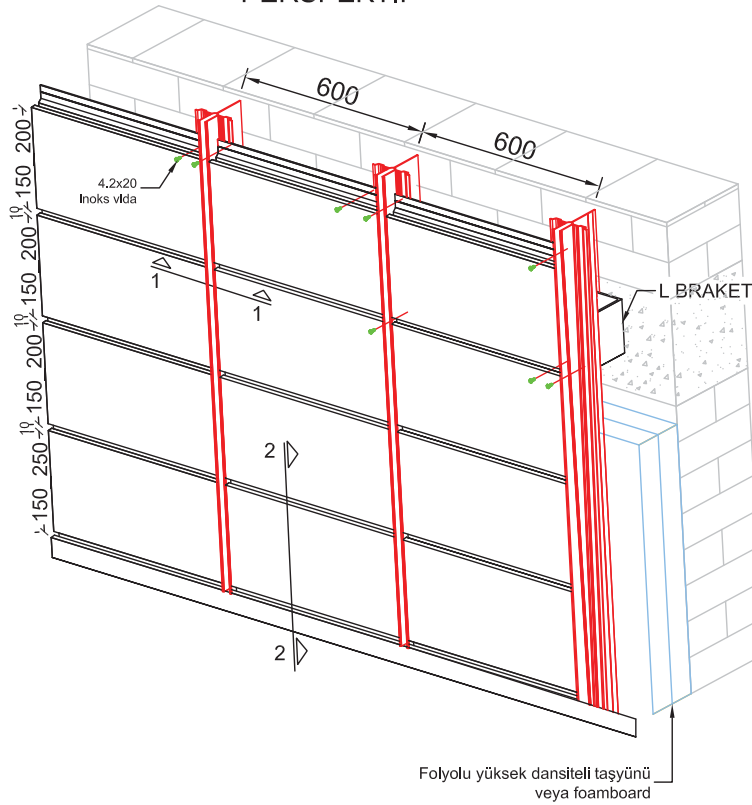
SİSTEM DETAYI



ÖLÇEK:1/4

SİSTEM DETAYI

PERSPEKTİF



2 NOLU DETAY

ÖLÇEK:1/4